

## FTRX-10 PANADAPTER INSTALLATION GUIDE

**DISCLAIMER: We are not responsible for any damage to your radio during installation. Please operate at your own risk.**

This document has been prepared to help you install the FTRX-10 panadapter into your Yaesu FTdx10 radio. This is a solderless operation, therefore this installation does not require any equipment other than a phillips head screwdriver and multimeter. You can remove the FTRX-10 panadapter from your radio at any time easily. For the updated documents, you can visit [www.radioanalog.com](http://www.radioanalog.com)

**FTRX-10 shipped with following items as shown in Figure.1:**

1. FTRX-10 panadapter.
2. U.FL to SMA female extension.
3. Fixture and m2.5 bolt.

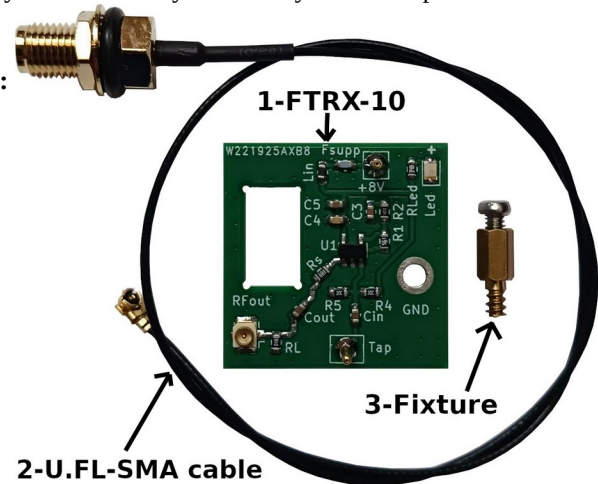


Figure.1 : FTRX-10 panadapter package content.

### **Installation Procedure :**

1. Turn the radio off, and cut the power completely.
2. Open the back cover of the radio, and remove the inner lid of the cage in Figure.2.
3. Pass U.FL to SMA cable through the tuner port aperture as in Figure.3.
4. Scratch the inductor **tap point** using a pick. (e.g.: multimeter probe tip) in Figure.4. In rare cases, solder flux residue can prevent tapping thus this step remove the parasitic insulation.
5. Remove the **screw** as shown in the Figure.4, and replace with the fixture in Figure.5 (use your fingers to install the fixture, and make sure not to cross thread).
6. Attach U.FL to SMA cable to the FTRX-10 in Figure.6.
7. Align FTRX-10 +8V pin to the via (+8V), then place the attachment hole onto the fixture as shown in Figure.7.
8. Turn the radio on, and check if the LED is ON in Figure.8. If LED is not ON, there is a problem with +8V pin alignment. Make sure it is seated properly.
9. Connect your SDR receiver (e.g.: **SDRUno**, **AirSPY HF+**, **RTL-SDR**, etc.) to the SMA output. Tune the radio to a known frequency (e.g. one of the known AM radio stations) along with your SDR receiver to monitor the broadcast. If you do not see any signal, you need to repeat the step 4.
10. Power off your radio, and close the cage lid, and back cover.
11. You are all set. Enjoy your FTRX-10 panadapter!

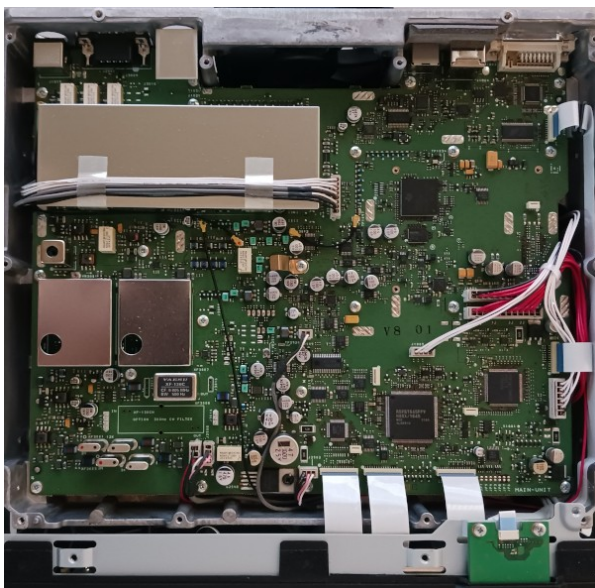


Figure.2 : Fully opened FTDX-10.



Figure.3 : U.FL to SMA cable installation.

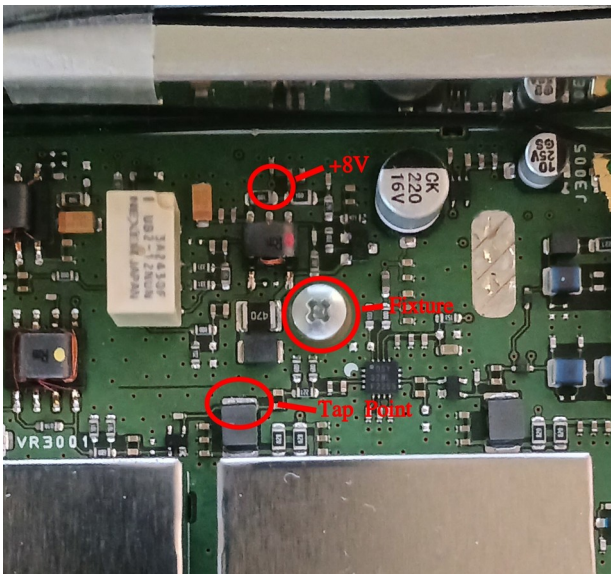


Figure.4 : +8V, Tap, and fixture locations.

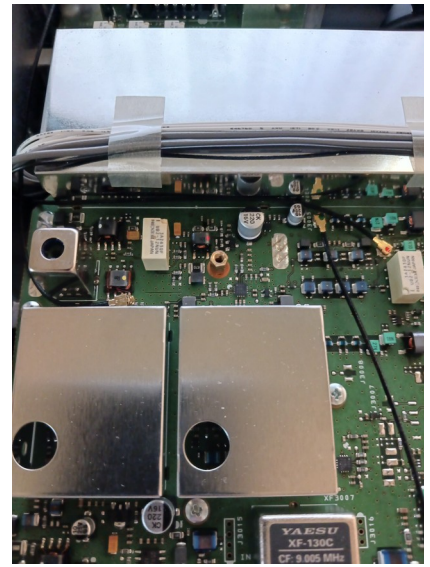


Figure.5 : Fixture installation.

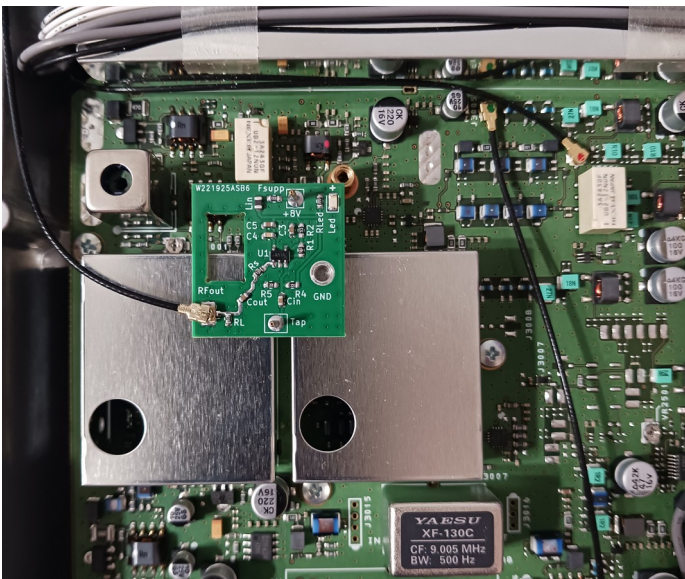


Figure.6 : U.FL-SMA cable attachment to FTRX-10.



Figure.7 : FTRX-10 attachment to the fixture.



Figure.8 : Ready to use FTRX-10 panadapter installation.